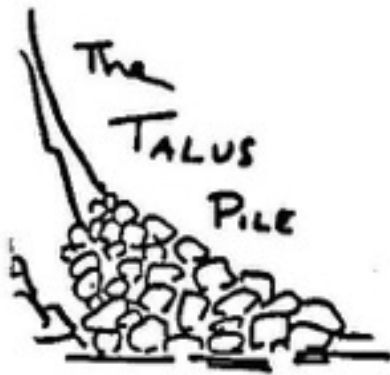


NUMBER 159

February 2016



CHINA LAKE MOUNTAIN RESCUE GROUP

P. O. BOX 2037
RIDGECREST CA 93556

TRAINING SCHEDULE

Mar	2	Technical Skills	Miles
Mar	5	Snow & Ice Recert - Mammoth Lakes	Swanson
Mar	TBD	Tracking Practice	TBD
Mar	14	Pre-Mtg - Knees & Ankles	Litton
Mar	14	Meeting	Huey
Mar	15-19	Pear Lake Hut	Roseman
Mar	19-20	Olancha	Huey
Apr	6	Girl Scout Traverse	Loughran
Apr	11	Meeting	Hueber
Apr	TBD	Tracking Practice	TBD
May	9	Meeting	TBD
May	TBD	Tracking Practice	TBD
May	21	Cal Region MRA Meeting - Santa Clarita/Douglas Cty	Swanson

SCREE

Check our web page at clmrg.org.

Check the California Region's web page at crmra.org.

Newsletters from other MRA groups, gear catalogs, etc. are available in the hut.



CLMRG is funded in part by United Way of Indian Wells Valley.

OPERATION REPORTS - 2016

Operation 2016-01 (Search - Technical Assist)

11 January 2016

Kern County/Johannesburg

By Tom Roseman

Summary:

The team assisted the Kern County Bomb Squad in setting up a lowering system into a basement.

Narrative:

I, Tom Roseman, received a call from Mike Myers who had received a call from Linda Finco who had received the request from Sgt. McMinn on Monday morning. I called Sgt. McMinn to get the details of the request. The Kern County Bomb Squad was on site in Johannesburg clearing a residence of improvised explosive devices. Our mission was to assist in setting up a lowering system into the basement in the house. I recruited T. Sakai, D. Hinman and D. Miles. Due to the nature of the request, I chose not to make a general call out at first. We decided to take the hoist and the tripod, along with ropes. Once onsite, things were delayed due to the time required to clear the building. We set up the tripod and the hoist as a demo for the Deputies who would have to set the system up inside, we were not allowed to be in the house due to the explosives inside. We had the bomb squad measure the inside dimensions of the room and placement of the shaft and then mapped it out on a dirt road to adjust the tripod to fit.

Since both Daryl and I needed to leave around 1400 I went ahead and made a full callout with the help of Coordinator S. Rockwell. D. Bishop agreed to lead the follow-on team to aid in this technical assist. Meeting at the Hut at 1400 were Dan Bishop, Al Green, Jeff Green, Nathan Simons, Matt Lee, Sean Litton, Sean McNamara, and Mike Derkey. Taking the rock drill, the team arrived at the location prior to 1500 and learned that our assistance was no longer needed; an alternative horizontal access shaft had been located. The entire team returned to the Hut and secured by 1600.

The Deputy on scene mentioned that the Subject may have had conducted activities in a near-by mine-shaft which may require follow on assistance by the Group. As the other mine turned out to be a surface mining operation, we were not called back.

LESSONS LEARNED:

A method to charge the rock drill battery in the vehicle while in route to an Operation should be investigated. Our current inverter and battery back-up devices are unable to charge the rock drill battery.

Operation 2016-02 (Rescue)

17-18 January 2016

Kern County/El Paso Mountains/Garlock

By Linda Finco

Summary:

Request to search for overdue couple.

Narrative:

I (Linda Finco) received a call from Sgt. Bittle with the Kern County Sheriff's Office at 2040 on Sunday, 17 January. KCSO received a report of two people overdue on a trip to the Burro Schmidt tunnel. The missing people were reported to be in their 60's/70's and driving a dark colored SUV. The people were from out of town, so most likely unfamiliar with the area. I told Sgt. Bittle we would get a team together and meet him at the turnoff to the tunnel off of Highway 14. Since the most likely scenario was their vehicle was stuck or broken down somewhere along the road to the tunnel, we decided not to call any additional resources at first, although the sheriff did have a request in for air support if we could not locate the vehicle.

I contacted Al Green and Dave Miles directly to get an advance team on the way. I then contacted Terry Mitchell and she coordinated the callout with the help of Carol Burge. Bob Huey, Tom Sakai, Paul DeRuiter, Bill Stratton, Sean Litton, and Sean McNamara committed. The plan was to meet at the hut as soon as possible and then meet the sheriff at the Command Post (CP) at the Highway 14 turnoff. During our mobilization, I got a call from the sheriff stating they now had new information. The vehicle was stuck on a rock and they were near the intersection of EP 146 and EP 15 on the Garlock Road side of the mountains. Also, the SUV was white, not a

dark color, and they had their hazard lights flashing to help in locating them. So we changed the meeting point for the CP to the turnoff for EP 146 off of Garlock Road. I contacted Miles with the updated information. We sent three additional vehicles, Sakai/Litton, DeRuiter/McNamara, and Finco/Huey/Stratton. We met the sheriff at the CP and teams headed up to locate the vehicle at 2230. The vehicle was located at 0030 and CLMRG assisted in getting the vehicle unstuck. The couple, Viki and Paul Spector (65yo and 66yo respectively) were in good condition. They had made it to the tunnel and got stuck on their route back to the highway (although they were heading in the opposite direction from Highway 14, and that is probably what led to their predicament). Another KCSO sheriff arrived on the scene, having come up from Garlock on EP 11. It was decided this would be the better way out, since it was real rough on EP 146 with boulders and deep gullies and a true 4WD vehicle was required to not bottom out. Everyone returned to the CP at 0100. The couple's vehicle was low on gas, so we caravanned back to Ridgecrest with them to ensure they made it to a gas station to fill up. We secured at the hut at 0200.

Postscript:

We brought the couple to the gas station in the Albertson's shopping center right off China Lake Blvd. They were not sure how to get back to Highway 178. I told them the easiest way was to go back to Highway 395 where we turned off to Ridgecrest, take a right and head north to Inyokern. Exit into Inyokern and head west through Inyokern back to Highway 14 and then they could take that south to Highway 178. We said goodbye and left them. As Tom Sakai turned off on College Heights Blvd to head to his home after our debrief at the hut, he saw a vehicle off to the side of the road with their right turn signal on. As Tom approached he thought it looked a lot like the vehicle we had just assisted. As he passed the vehicle he confirmed it was their vehicle, so he made a U-turn and went back to see what the problem was. They were lost and trying to figure out how to get back to Highway 178. Best we can figure they came out at the stop light and went straight across versus making the right on China Lake Blvd to head back to 395. Tom explained to them again the directions. We have not heard any more, so hopefully they found Highway 178!

Comments:

I used Calling Post to get a quick message out to everyone. When I left the message, it just turned to 9 pm. Calling Post will only deliver messages between 9 am and 9 pm. I was hoping I met the cutoff, but I did not. I meant to call and cancel the post, but forgot, so we all got a call again at 9 am on Monday, which confused a few people.

Operation 2016-03 (Rescue)

18-19 January 2016

Kern County/El Paso Mountains/Garlock

By Linda Finco

Summary:

Request to rescue family near Burro Schmidt tunnel.

Narrative:

I (Linda Finco) received a call from Dep. Nance with the Kern County Sheriff's Office at 1810 on Monday, 18 January. KCSO received a report of a family stuck after a trip to the Burro Schmidt tunnel. There were 2 adults and 4 juveniles and they were in a red SUV. There was a KCSO deputy in the area who was trying to locate the vehicle. Dep. Nance put CLMRG on standby to assist if the sheriff could not find the vehicle. I contacted Terry Mitchell and she coordinated the callout with help from Carol Burge. Members were to get a ready pack and be ready to respond quickly if we got the go from the sheriff. Eleven members committed, Tom Roseman, Dave Miles, Bob Huey, Luke Swanson, Mike Derkey, Tom Sakai, Al Green, Dave Doerr, Bill Stratton, Sean Litton and Mike Franklin. At 1900 we got the go from the sheriff. The initial plan was to meet the sheriff off of Highway 14 at the Burro Schmidt Tunnel turnoff. We mobilized at the hut. Miles coordinated with the sheriff and got the cell phone number of the family and called them directly. Miles directed them on how to provide a GPS coordinate from their iPhone. We plotted the location and determined they were on the Garlock Road side of the mountains, and the best approach to their location would be from EP 100 off of Garlock. Miles contacted the sheriff who was at the Burro Schmidt Tunnel and gave him the coordinates for the position of the stranded vehicle

which was southeast of their current position. I called Dep. Nance and changed the location of the CP to the turnoff to EP 100 off Garlock.

We had a total of 5 vehicles. We arrived at EP 100 at 2030. The sheriff on scene was able to locate the stranded vehicle, but could not access it, since they were not on a marked BLM road. From the turnoff to EP 100 we could see the light shining from the sheriff's vehicle and the flashing hazard lights of the stranded vehicle below. We sent 3 vehicles to assist (since there were 6 members of the family to extricate if the stranded vehicle had to be left). Two vehicles we kept at the road head in case we needed another plan to get to the vehicle. The CLMRG teams arrived to the location of the sheriff above the stranded vehicle at 2130. At that time friends of the stranded family also arrived in their 4WD and found a route down to the vehicle bringing food and water. Since the stranded vehicle was not on a designated BLM road, and we did not want to get one of our vehicles stuck, Miles and Doerr descended on foot to help determine what further assistance was needed now that they had friends on the scene. Miles verified the front locking hubs were not working on the stranded vehicle which made it difficult for the vehicle to get traction. By weighting the vehicle with rocks they were able to slowly work their way back to the location of the sheriff and our team's vehicles. All vehicles were back at the road head at 2313. We debriefed with the sheriff and returned to Ridgecrest. We secured at the hut at midnight.

Operation 2016-04 (MRA Technical Rock Recertification)

30 January 2016

Alabama Hills

By Linda Finco

Summary:

CLMRG was recertified by the CalMRA in the area of Technical Rock Rescue.

Narrative:

As part of the California Region Mountain Rescue Association accreditation process, CLMRG was scheduled for a Technical Rock test on January, 30, 2016 in the Alabama Hills. Members met at the hut the previous afternoon on 29 January to load the vehicles. Members participating in the test mobilized at the hut on Saturday at 0700. We stopped in Lone Pine for breakfast and arrived at the designated location at 0940. Members started to gear up, including rain gear since there was a light rain with a forecast of heavier rain in the afternoon. Proctors from the California Region arrived just before 1000 and provided us the name, Tommy Ingulfson, and GPS of the reporting party (RP). The RP stated his girlfriend, Anne Marie Cody, was injured. We arrived at the GPS location and were told the RP had returned to be with his girlfriend around the corner from where the vehicles were parked.

We sent an advance team of Miles, Hinman, Roseman, Swanson and Litton. They quickly located the RP and made voice contact with Anne Marie. Anne Marie was located about 80 feet up on a ledge. There were many large boulders to cross to get to her location and a low 5th class pitch to reach her location. Litton provided the medical assessment and determined the most significant injury was an unstabilized fracture of the lower right leg. The leg was splinted and the Bothe bag was used as a shelter to protect Anne Marie from the weather. Miles and Hinman decided a high line was the best solution to lower Anne Marie off the jumble of rocks. So as the other members, Niesen, J. Green, Franklin, Sakai, Huey, Myers, Lee and Simons ascended to the ledge to begin setting up anchors and the stretcher, Finco, Doerr and Stratton stayed below to set up the highline tensioning system with assistance later from Hinman. Breitenstein was recording the medical and providing Litton with time updates for checking vitals. It took about an hour to set anchors and about 30 minutes to complete the tensioning system. It was less than 30 minutes to get the stretcher with Swanson, as the attendant, and Anne Marie down to the ground. The problem completed at 1300. We broke down the systems and used the highline to remove the gear and most personnel from the ledge. We were back to the vehicles for our debrief at 1400.

The proctors gave the team a pass. Areas that were commended were leadership (members responded quickly to requests from leaders and it was obvious the leaders were in control), and teamwork (discussions, but no arguing and when the highline decision was made, members reacted to their new assignments quickly). We left the Alabama Hills at 1500 and arrived back at the hut around 1620 and after laying out the equipment to dry we had our own debrief and secured at 1700.

GROUP BUSINESS

2016 Officers were elected at the December 2015 meeting. Our 2016 Officers are:

President: Gina Najera-Niesen
Vice President: Mike Derkey
Secretary: Nathan Simons
Treasurer: Werner Hueber
MRA Rep: Luke Swanson

CONGRATULATIONS!

— YEAR END REPORTS 2015—

Year End Committee Reports (other than Operations) will be published in the next Talus Pile

2015 Operations Summary by Dan Bishop

We had 14 operations in 2015. These operations were composed of nine searches ranging from Madera County to San Bernardino County as well as Kern County. Additionally two of the operations involved the rescue of hikers in the Whitney area. We were unable to field a team to respond to a request from Fresno County to assist in a search for an overdue hiker or we would have had ten searches.

Alert	Mobilization	Transit	Search	Rescue
2	0	1	9	2

The activity of the subjects for nine of the eleven fielded operations was categorized as hiking. Helicopters were utilized, at some point during the operation, on seven of the missions.

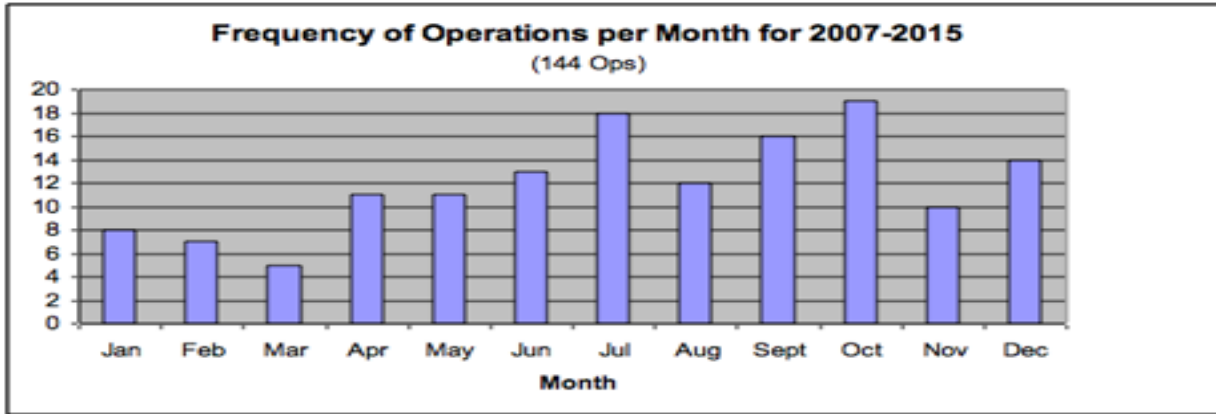
Six of the fourteen of the requests to assist came from Kern County.

Kern	Inyo	Madera	San Bernardino	Riverside
6	5	1	1	1

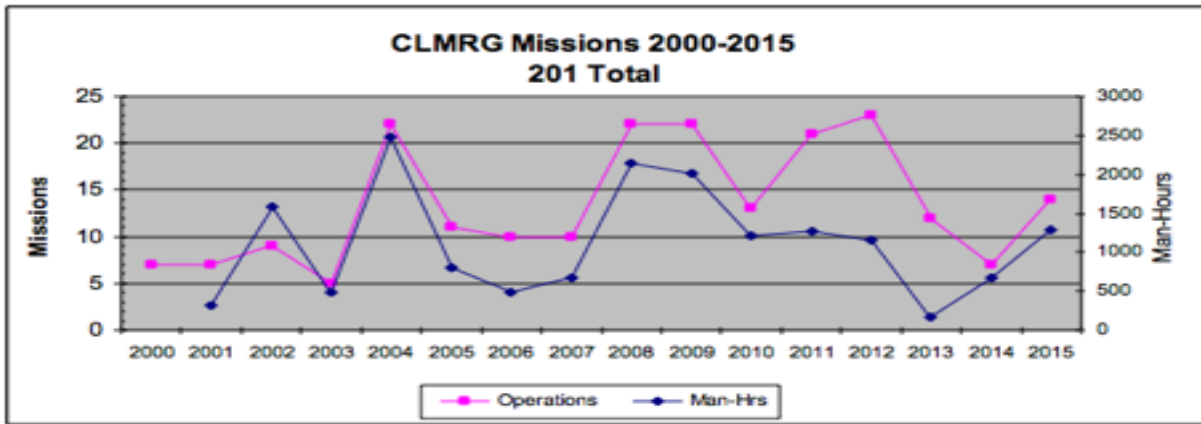
Breaking down the operations by month shows October as our busiest month.

Jan	Feb	March	April	May	June	July	Aug	Sept	Oct	Nov	Dec
1	0	0	1	1	1	1	1	1	5	1	1

Below is the monthly frequency of operations per month since 2007.



We expended 1288 man-hours during these operations and logged 6172 vehicle miles. We averaged six members committing per call out. The largest number of members committing to an operations was for a Kern County alert in July. The graph below shows the operation number and man-hour trend over the past 16 years.



Below is a summary of all the operations this year as well as other notable Group commitments.

SUMMARY OF OPERATIONS						
OPERATIONS IN 2015						
Number	Date	Type	Op Leader	Coordinator	Commitment	Location / Requesting Agency / Description
2015-01	05-07 Jan	SEARCH	M.MYERS	J.WESTBROOK	M.MYERS T.SAKAI N.SIMONS J.SLAGER B.STRATTON M.LEE S.LITTON J.GREEN	BIG BEAR / SAN BERNARDINO COUNTY. Multi-day search for missing Subject in terrain around Fawnskin. Subject located in lake, by aerial surveillance.

MRA	06-07 Mar	MRA RECERT	D.MILES	M.MYERS	D.MILES M.MYERS T.ROSEMAN N.SIMONS D.HINMAN G.NIESEN T.SAKAI B.HUEY B.STRATTON M.LEE D.DOERR S.LITTON	Joshua Tree National Park
2015-02	27-28 Apr	SEARCH	D.MILES	J.WESTBROOK	D.MILES T.ROSEMAN S.LITTON B.STRATTON	IDYLVILD / RIVERSIDE COUNTY. Search for a hiker who became separated from his group near Idylwild. CLMRG inserted via helicopter to search last possible location. Subject hiked out to a campground after four days.
2015-03	10-12 May	SEARCH	L.SWANSON L.FINCO	J.WESTBROOK	L.SWANSON L.FINCO D.MILES S.LITTON	SALINE VALLEY DUNES / INYO COUNTY. Multi-day search for missing Subject in Saline Valley who became lost in the dunes. Subject located by CHP helicopter.
2015-04	26-28 June	SEARCH	L.SWANSON	M.SCHMIERER	L.SWANSON N.SIMONS A.GREEN	CLOVER MEADOW / MADERA COUNTY. Search for missing Subject. Located injured and evacuated via Kern County Air-5 helicopter.
2015-05	20-21 July	ALERT	L.FINCO	S.ROCKWELL	L.FINCO D.MILES D.BISHOP L.SWANSON G.NIESEN A.GREEN D.DOERR S.LITTON M.FRANKLIN	KERN COUNTY. Team on Alert for assistance in the County due to potential SAR and evacuation activity associated with rains and severe weather potential.
2015-06	01-15 Aug	SEARCH	D.MILES T.ROSEMAN	C.BURGE	D.MILES T.ROSEMAN A.GREEN J.SLAGER S.LITTON J.GREEN	KERN COUNTY. Assist Sheriff in Command Post for search of wanted fugitive.
NOT FIELDED	25-27 Aug	NON - SEARCH	T.ROSEMAN D.BISHOP	C.BURGE	T.ROSEMAN D.BISHOP N.SIMONS J.GREEN	FRESNO COUNTY. Requested to search for overdue hiker. Unable to field a team to respond. Subject found after 6 days.
2015-07	25-Sep	RESCUE	B.HUEY	T.MITCHELL C.BURGE	B.HUEY N.SIMONS T.SAKAI	WHITNEY NORTH FORK / INYO COUNTY. Overnight Rescue of injured Subject on the Ebersbacher Ledges up the North Fork of Lone Pine Creek.

2015-08	03-04 Oct	RESCUE	L.FINCO	M.SCHMIERER S.ROCKWELL	L.FINCO T.ROSEMAN D.BISHOP D.MILES L.SWANSON B.HUEY N.SIMONS T.SAKAI	WHITNEY TRAIL CAMP / INYO COUNTY. Rescue of two exhausted and hypothermic hikers on the Whitney trail at Trail Camp. Snow storm necessitated escorting the Subjects to the trail head.
2015-09	06-Oct	TRANSIT	N.SIMONS	S.ROCKWELL T.MITCHELL	N.SIMONS M.FRANKLIN M.DERKEY M.LEE	WHITNEY TRAIL CAMP / INYO COUNTY. Transit to assist with frostbite victim at Trail Camp. Helicopter was able to extract Subject as team arrived in Lone Pine.
2015-10	16-17 Oct	SEARCH	T.ROSEMAN	T.MITCHELL C.BURGE	T.ROSEMAN D.MILES S.LITTON D.BISHOP T.SAKAI D.DOERR M.DERKEY A.GREEN	KERN COUNTY. Assist in search for flood/mud-slide victims on Highway 58 and near Rosamond.
2015-11	19-Oct	SEARCH	T.ROSEMAN	T.MITCHELL	T.ROSEMAN M.MYERS D.BREITENSTEIN D.HINMAN M.FRANKLIN L.FINCO S.LITTON T.SAKAI	KERN COUNTY. Assist in search for Subject caught in flood/mud-slide near Rosamond.
2015-12	24-Oct	SEARCH	B.HUEY	S.ROCKWELL J.WESTBROOK	B.HUEY T.ROSEMAN D.BREITENSTEIN N.SIMONS A.GREEN J.GREEN D.HINMAN	KERN COUNTY. Assist in search for Subject caught in flood/mud-slide near Rosamond.
2015-13	20-21 Nov	SEARCH	D.MILES D.BISHOP	C.BURGE M.SCHMIERER	D.MILES N.SIMONS L.SWANSON T.SAKAI B.STRATTON J.SLAGER D.BISHOP T.ROSEMAN	MEYSAN LAKE / INYO COUNTY. Search for overdue hiker believed to be in the Meysan drainage. Subject found in avalanche debris field.
2015-14	21-Dec	ALERT	L.FINCO		L.FINCO D.MILES	KERN COUNTY. Alerted to search for elderly dementia Subject. Person found as call-out was being initiated.

China Lake is funded in part by the United Way of Indian Wells Valley



China Lake Mountain Rescue Group
PO Box 2037
Ridgecrest, CA 93556

